



# TOWN OF SKANEATELES

## AUSTIN ARENA

INFORMATION SESSION

January 27, 2025

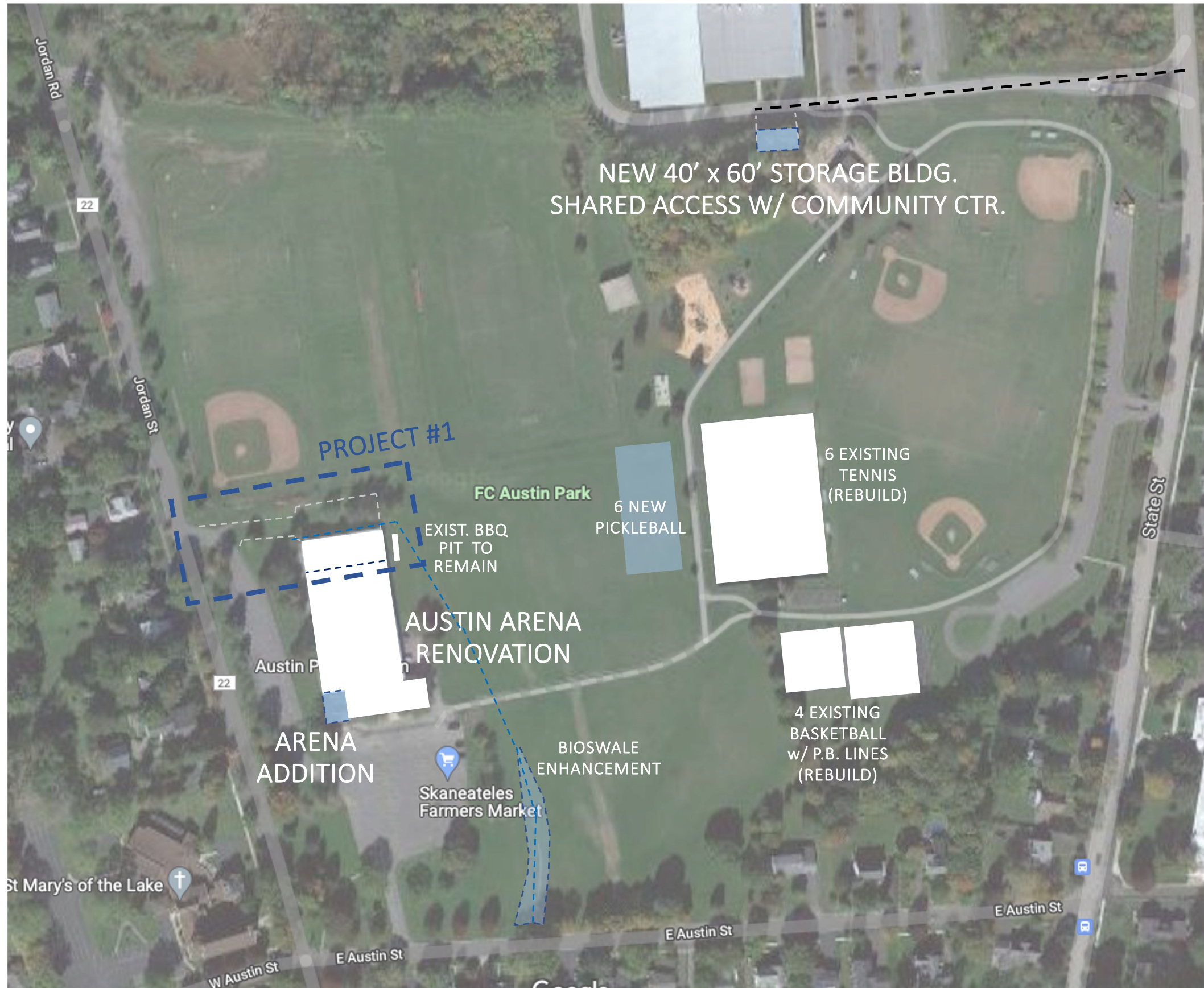






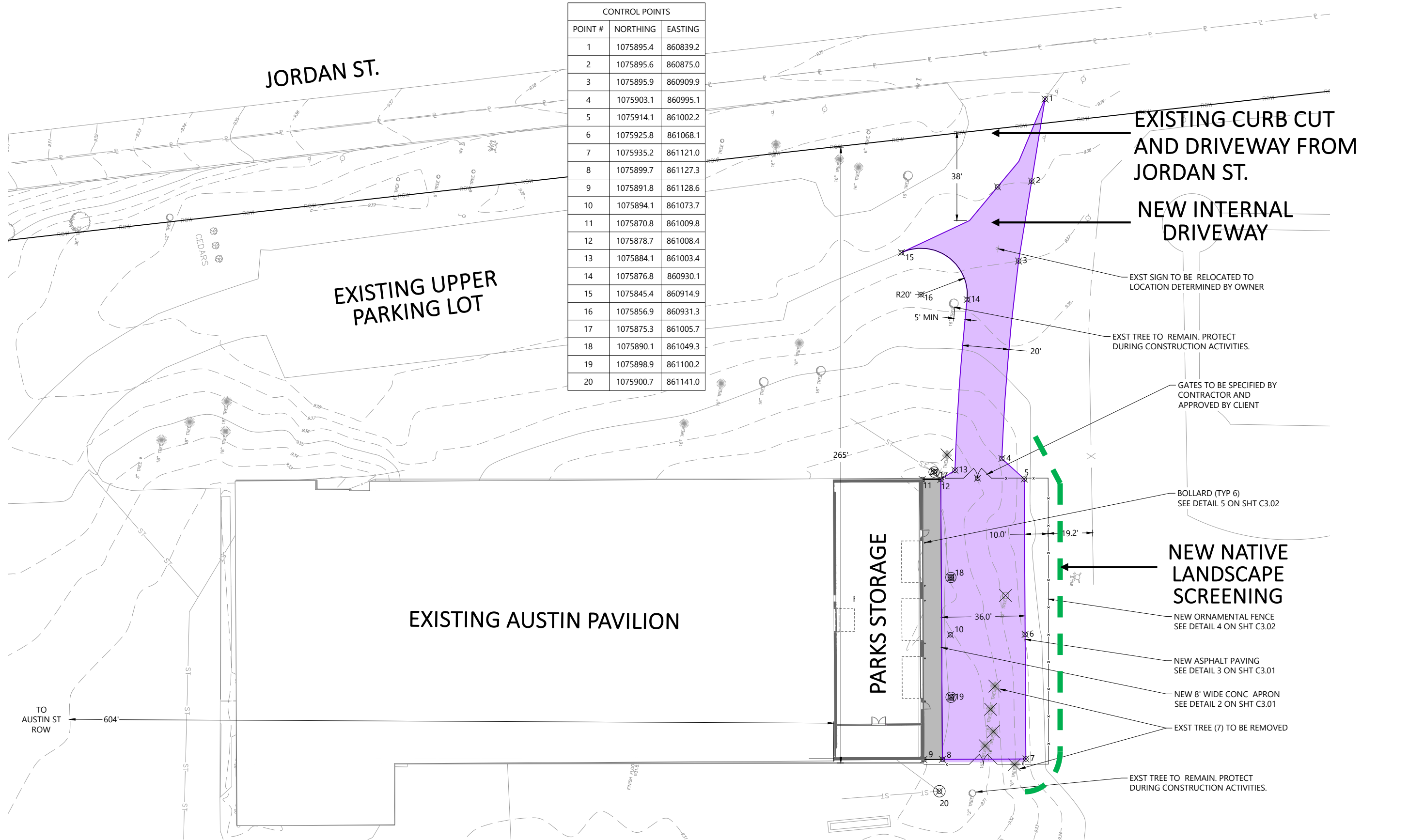
AUSTIN PARK - PROPOSED SITE MASTER PLAN





AUSTIN PARK - PROPOSED SITE MASTER PLAN

CONTROL POINTS		
POINT #	NORTHING	EASTING
1	1075895.4	860839.2
2	1075895.6	860875.0
3	1075895.9	860909.9
4	1075903.1	860995.1
5	1075914.1	861002.2
6	1075925.8	861068.1
7	1075935.2	861121.0
8	1075899.7	861127.3
9	1075891.8	861128.6
10	1075894.1	861073.7
11	1075870.8	861009.8
12	1075878.7	861008.4
13	1075884.1	861003.4
14	1075876.8	860930.1
15	1075845.4	860914.9
16	1075856.9	860931.3
17	1075875.3	861005.7
18	1075890.1	861049.3
19	1075898.9	861100.2
20	1075900.7	861141.0



JORDAN ST.

EXISTING UPPER  
PARKING LOT

EXISTING AUSTIN PAVILION

PARKS STORAGE

EXISTING CURB CUT  
AND DRIVEWAY FROM  
JORDAN ST.

NEW INTERNAL  
DRIVEWAY

EXST SIGN TO BE RELOCATED TO  
LOCATION DETERMINED BY OWNER

EXST TREE TO REMAIN. PROTECT  
DURING CONSTRUCTION ACTIVITIES.

GATES TO BE SPECIFIED BY  
CONTRACTOR AND  
APPROVED BY CLIENT

BOLLARD (TYP 6)  
SEE DETAIL 5 ON SHT C3.02

NEW NATIVE  
LANDSCAPE  
SCREENING

NEW ORNAMENTAL FENCE  
SEE DETAIL 4 ON SHT C3.02

NEW ASPHALT PAVING  
SEE DETAIL 3 ON SHT C3.01

NEW 8" WIDE CONC. APRON  
SEE DETAIL 2 ON SHT C3.01

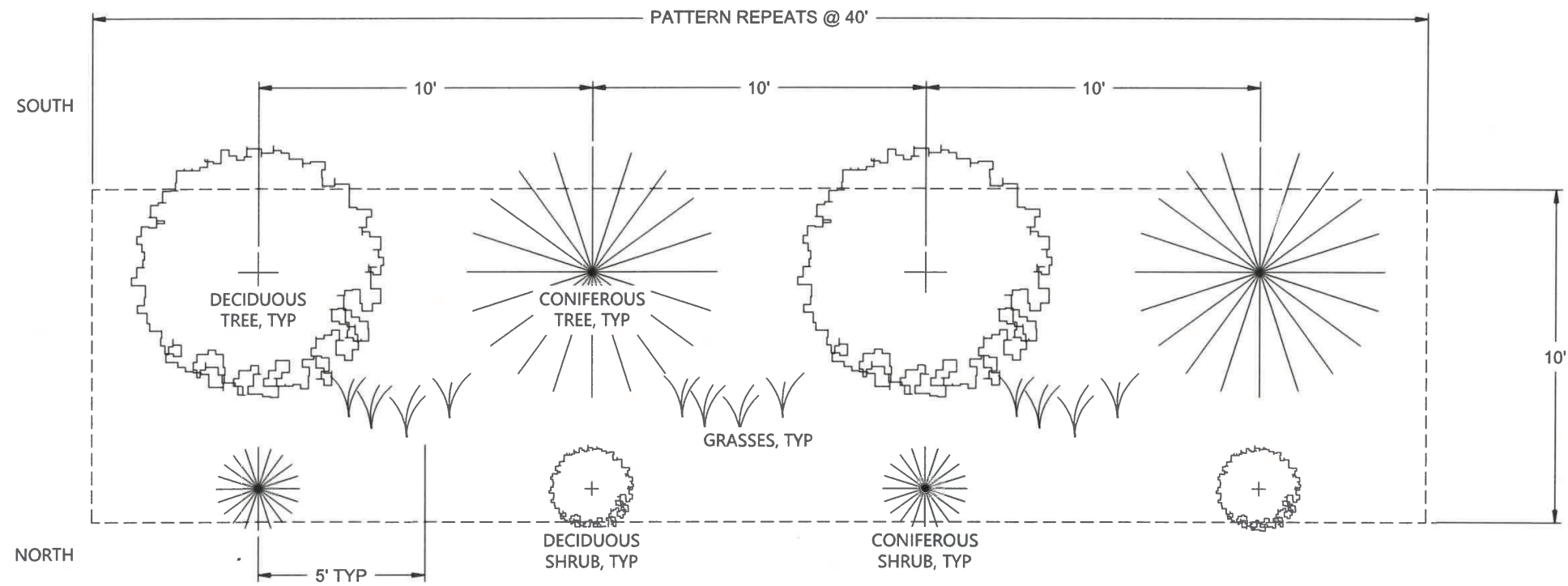
EXST TREE (7) TO BE REMOVED

EXST TREE TO REMAIN. PROTECT  
DURING CONSTRUCTION ACTIVITIES.

TO  
AUSTIN ST  
ROW

# SITE PLAN – PROJECT #1





1 PLANTING PATTERN  
C1.04 SCALE: NTS

***Skaneateles – USDA Plant Hardiness Zone 5b***

**Trees – evergreens. Plant 10ft on center. Trees will be min 8 ft tall with min 2" DBH.**

Eastern white pine (*Pinus strobus*)

Canadian hemlock (*Tsuga canadensis*)

Eastern redcedar (*Juniperus virginiana*)

**Trees – deciduous. Plant 10ft on center. Trees will be min 8 ft tall with min 2" DBH.**

Northern red oak (*Quercus rubra*)

Red maple (*Acer rubrum*)

Black walnut (*Juglans nigra*)

**Shrubs – deciduous. Plant 4ft on center offset. Shrubs shall be 3 gal container**

Red Chokeberry (*Aronia arbutifolia*) - 6-10 ft tall, 3-6 ft wide

Common Elderberry (*Sambucus canadensis*) – 9-12 ft tall, 6-12 ft wide

Ninebark (*Physocarpus opulifolius*) - 5-10 ft tall, 6-8 ft wide

Northern spicebush (*Lindera benzoin*) - 6 to 12 ft. tall

Southern arrowwood (*Viburnum dentatum*) - 6 to 8 ft. tall

**Shrubs – evergreen. Plant 4 ft on center offset. Shrubs shall be 3 gal container**

American holly (*Ilex opaca*) – 15-30 ft tall

Inkberry holly (*Ilex glabra*) – 5-8 ft tall

Winterberry holly (*Ilex verticillata*) – 3-12 ft tall

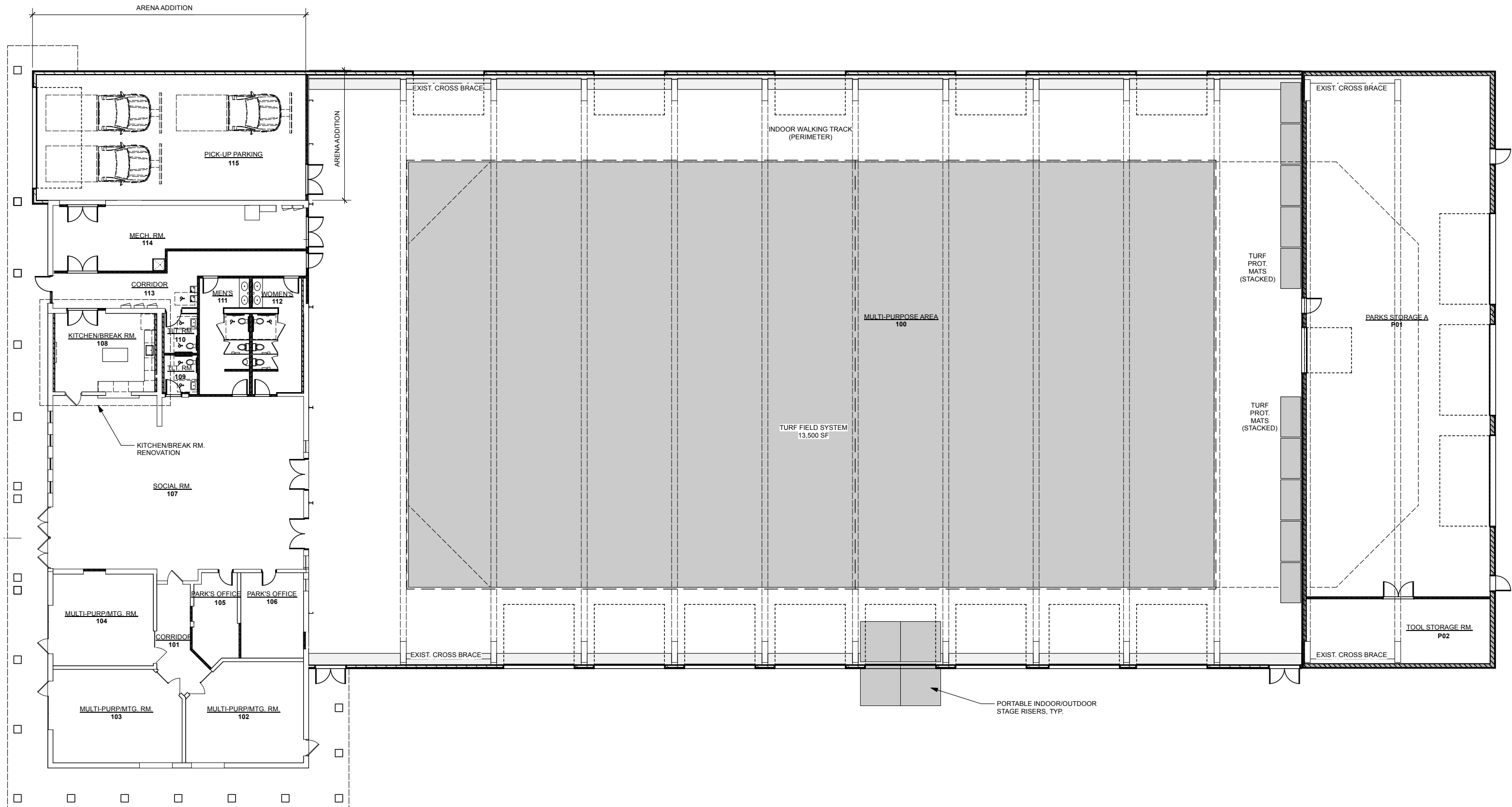
**Grasses – infill among shrubs offset. Grasses shall be 2 gal container \***

Switchgrass (*Panicum virgatum*) – 6 ft tall

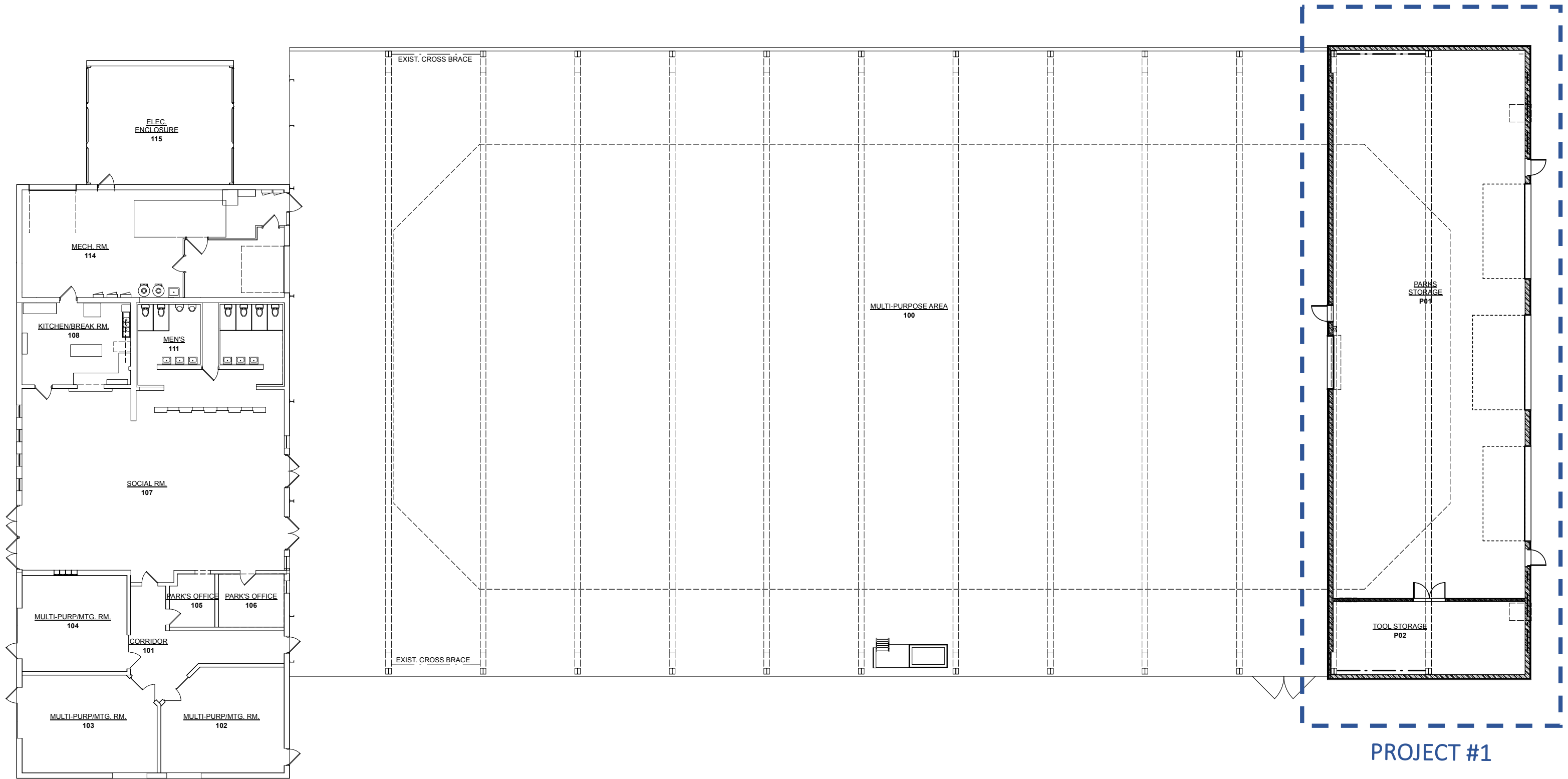
Big Bluestem (*Andropogon gerardi*) – 6ft tall

Yellow Indiangrass (*Sorghastrum nutans*) – 6ft tall

**SITE PLAN – NATIVE LANDSCAPE SCREENING**



# AUSTIN ARENA RENOVATION – PROPOSED MASTER PLAN



# AUSTIN ARENA RENOVATION – PROJECT #1





VIEW FROM NORTHEAST  
LOOKING AT ARENA

EXISTING  
PAVILION





VIEW FROM NORTHEAST  
LOOKING AT ARENA

CONCEPT RENDERING  
PROJECT #1





Thank you!