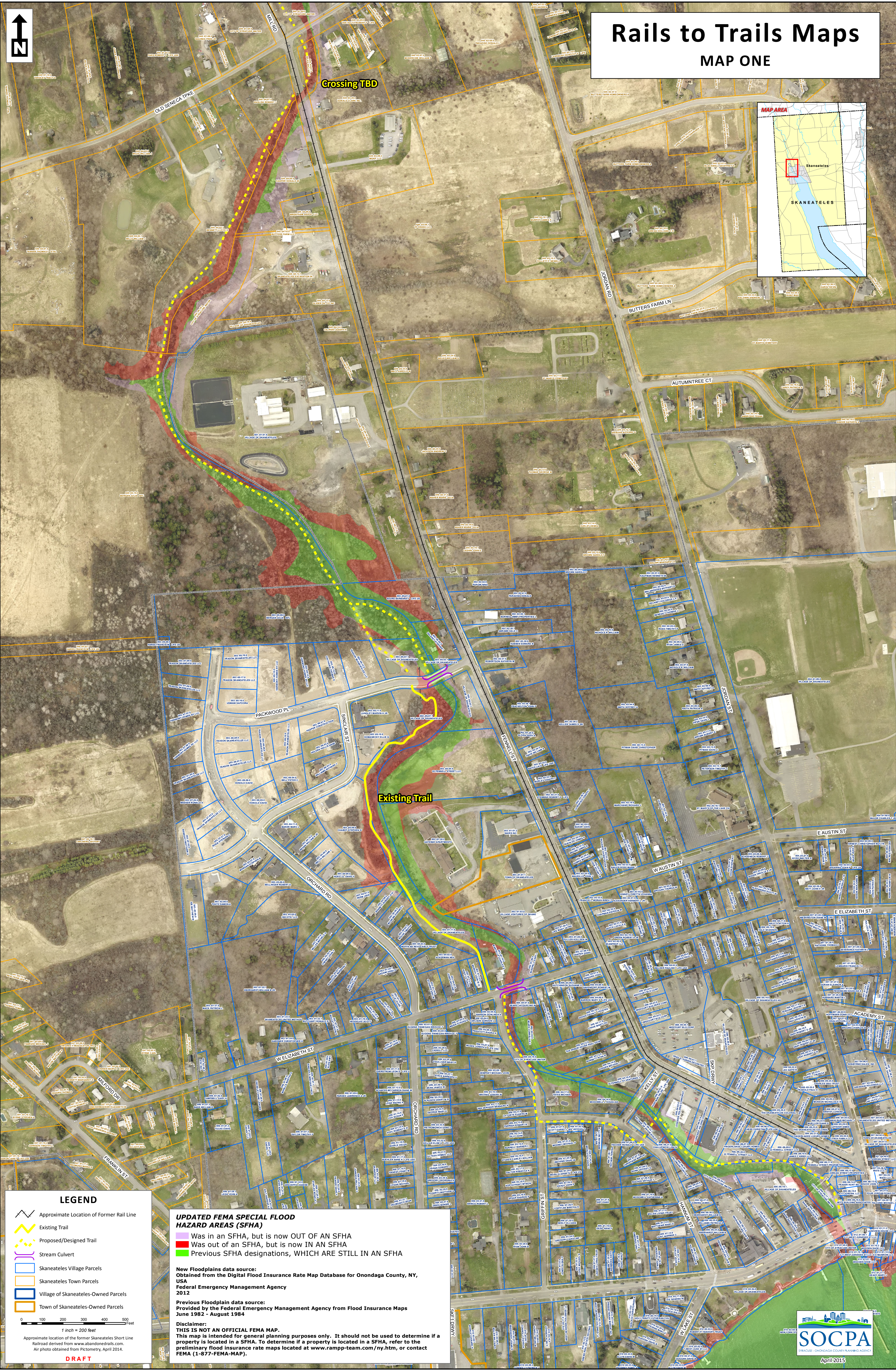
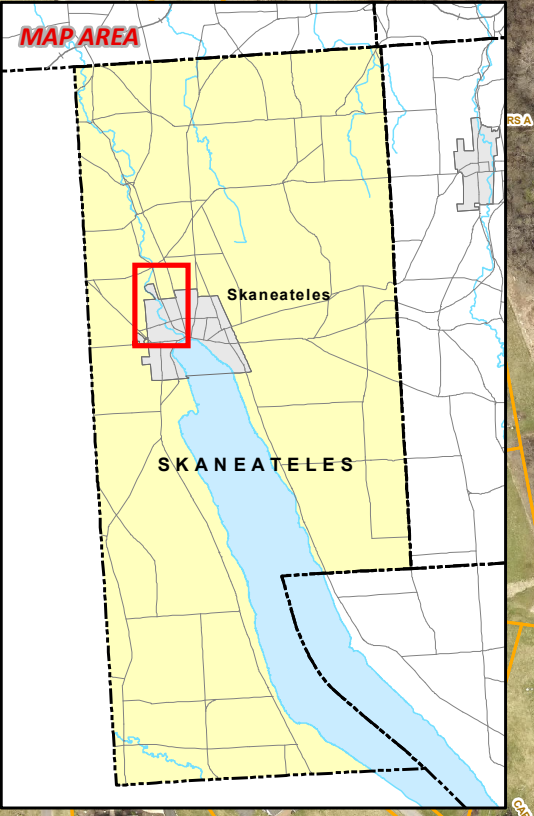


# Rails to Trails Maps

## MAP ONE



### LEGEND

- Approximate Location of Former Rail Line
- Existing Trail
- Proposed/Designed Trail
- Stream Culvert
- Skaneateles Village Parcels
- Skaneateles Town Parcels
- Village of Skaneateles-Owned Parcels
- Town of Skaneateles-Owned Parcels

**UPDATED FEMA SPECIAL FLOOD HAZARD AREAS (SFHA)**

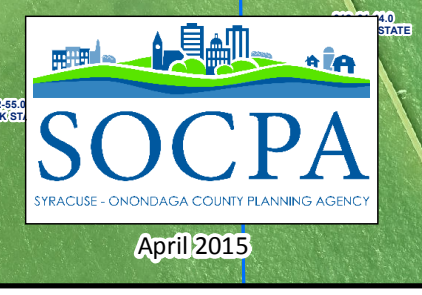
- Was in an SFHA, but is now OUT OF AN SFHA
- Was out of an SFHA, but is now IN AN SFHA
- Previous SFHA designations, WHICH ARE STILL IN AN SFHA

**New Floodplains data source:**  
Obtained from the Digital Flood Insurance Rate Map Database for Onondaga County, NY, USA  
Federal Emergency Management Agency  
2012

**Previous Floodplain data source:**  
Provided by the Federal Emergency Management Agency from Flood Insurance Maps June 1982 - August 1984

**Disclaimer:**  
**THIS IS NOT AN OFFICIAL FEMA MAP.**  
This map is intended for general planning purposes only. It should not be used to determine if a property is located in a SFHA. To determine if a property is located in a SFHA, refer to the preliminary flood insurance rate maps located at [www.ramp-team.com/ny.htm](http://www.ramp-team.com/ny.htm), or contact FEMA (1-877-FEMA-MAP).

0 100 200 300 400 500 Feet  
1 inch = 200 feet  
Approximate location of the former Skaneateles Short Line Railroad derived from [www.abandonedrails.com](http://www.abandonedrails.com).  
Air photo obtained from Pictometry, April 2014.



DRAFT